

# TRAINING ALERT

Train as if your life depends on it... BECAUSE IT DOES!

Number 04-08

Oct. 2004

The In-Service Section will issue training alerts as the need arises.  
They are intended to be shared at line-up.

## NEEDLE STICK INJURIES (FROM MIS-USE OF P2 "SHARPS SHUTTLE")

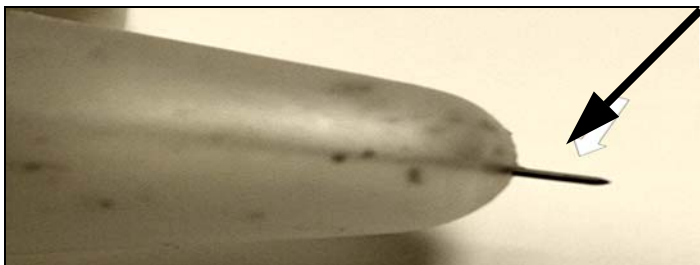
Recently, there has been three (3) Level III exposures to LAFD members from contaminated needle sticks. All of these exposures occurred when needles were pushed through the bottom of the P2 Sharps Shuttle, sticking the member. The P2 Sharps Shuttle is carried on all ALS resources and is used to safely store contaminated needles until properly discarded.

The P2 Sharps Shuttle



Preliminary evidence indicates that the shuttles were filled beyond the recommended, single use, capacity with needles and syringes causing a needle to puncture the bottom of the containers and sticking the member.

The following are the manufacturer's instructions and shall be followed without exception. **Members must use caution not to overfill the device** and, if necessary, sufficient containers shall be carried to adequately accommodate disposal of anticipated usage.



**Needle protruding through the bottom of the container.**

TO DISPOSE OF SHARP WHEN CONTAINER IS IN VERTICAL POSITION:

1. Using one hand place sharp needle point first into shuttle body until sharp is securely within shuttle, then release sharp. **DO NOT INSERT THUMB/FINGERS INTO SHUTTLE.**
2. Grasp the shuttle body beneath the opening with one hand, ensuring your palm, fingers, and thumb are clear of the opening.
3. Verify all sharps sit completely inside of shuttle and do not project above container opening.
4. Use the other hand to close the cap/lid onto the shuttle, listen for an audible snap--indicating that the cap/lid assembly is securely fastened to the shuttle body.

TO DISPOSE OF SHARP WHEN CONTAINER IS IN HORIZONTAL POSITION:

1. Using one hand slide the sharp, point first, into shuttle until the sharp is securely inside shuttle. **DO NOT INSERT THUMB/FINGERS INTO SHUTTLE.**
2. Grasp the shuttle beneath the opening with one hand ensuring your palm, fingers, and thumb are clear of the opening.
3. Lift and rotate the shuttle to a vertical position.
4. Verify all sharps sit completely inside of shuttle and do not project above the container opening.
5. Use the other hand to close the cap/lid onto shuttle and listen for an audible snap—indicating that the cap/lid assembly is securely fastened to the shuttle body.

**Safe handling of the Sharps Shuttle and adherence to the aforementioned instructions should preclude any additional exposures to emergency personnel.**

