



TACTICAL DECISION GAMES

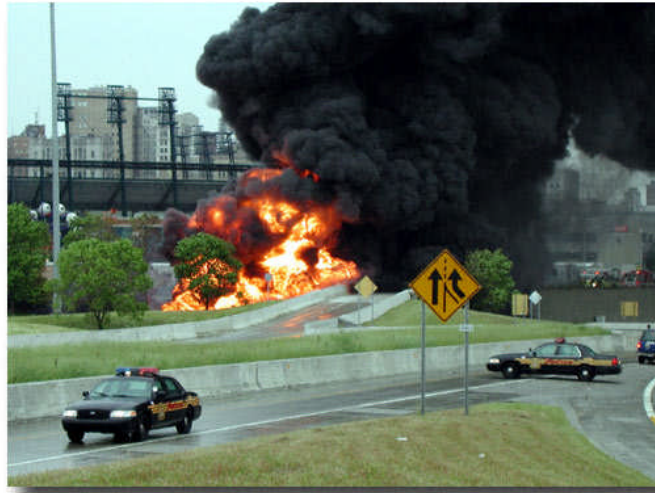
Use Training Code 08AT for Network Staffing Entries

A	
B	
C	

Role-playing Ideas

- Have one member “role play” the position of Engineer in order to provide a solution.
- You can also divide members into groups in order to develop solutions.
- Solutions should be submitted via email to tdg@lafdtraining.org
- Solutions from the field can be viewed online at www.LAFDtraining.org.

FUEL TANKER



L
A
F
D



You are the Engineer assigned to Engine 85. It is approximately 1300 hours when Task Force 85, Rescue 85, Engine 38, EMS 6 and Battalion 6 are dispatched to a tanker fire on the northbound 110 freeway at Pacific Coast Highway. While enroute you observe a large, black “loom-up” in the vicinity of the incident. You hear the Captain II from TF 85 order additional resources once on-scene. E38 and E285 are directed to establish a water supply to the incident.

You are able to spot E85 uphill and upwind from the incident. You observe that a large tanker has veered off the freeway and is on an embankment. The tanker is fully involved. The IC reports that the contents of the tanker is gasoline only. Civilian traffic has been diverted by the CHP and a Security Guard. There is no water supply on the freeway and E285 lays reverse from E85. E285 will be receiving water from E38. You hear E38 confirm that a water supply has been established to E285.



Engineer Guidelines

- Describe different methods of freeway water supply
- Describe various methods of foam generation
- Describe various methods of foam application
- Describe differences between northbound and southbound tankers
- Describe methods of supplying LAFD Foam Apparatus